

043

011

009

008

025

010

024

024

018

024

018

024

018

018

017

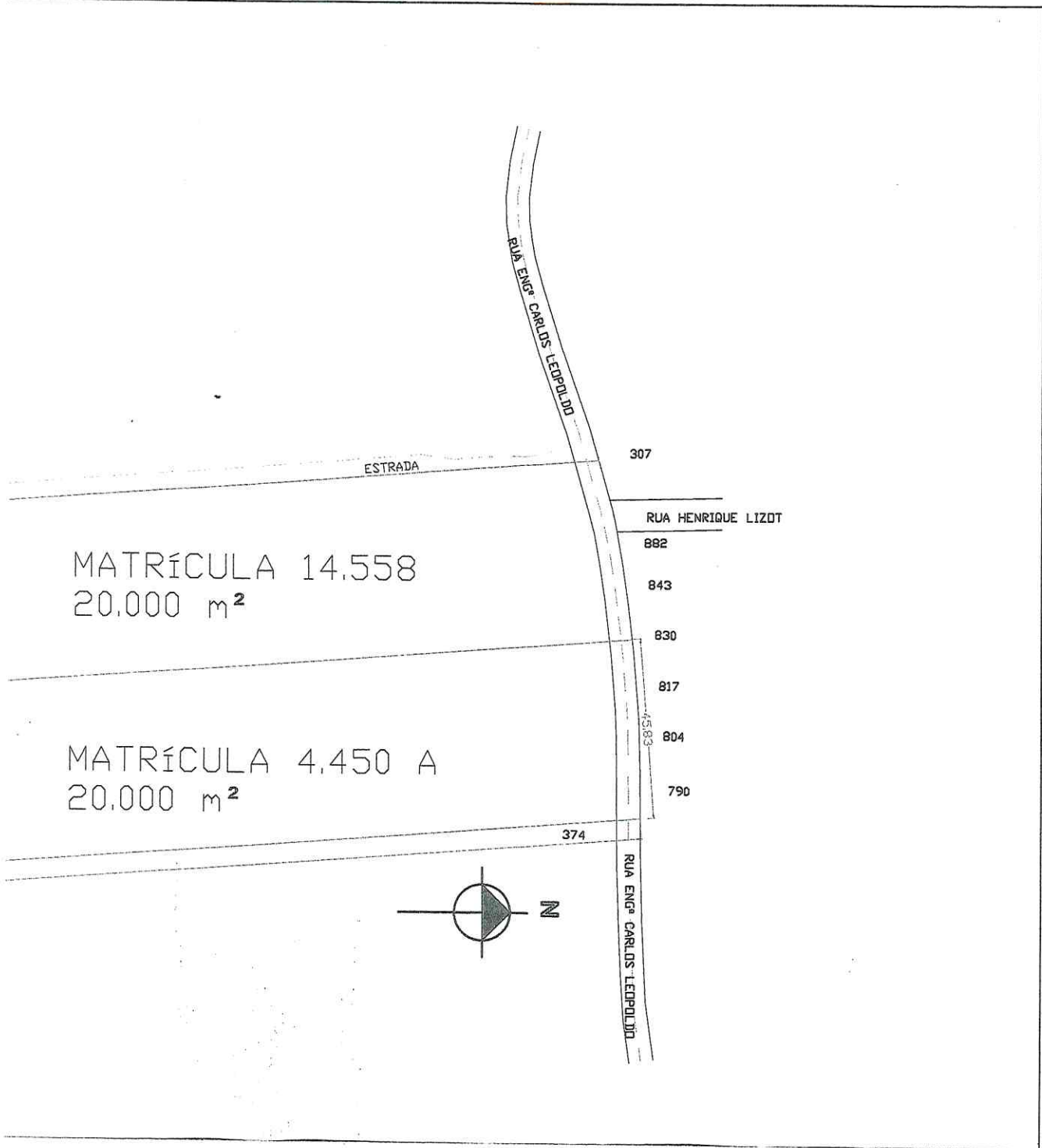
016

MATRÍCULA 14.558  
ÁREA 20.000 m<sup>2</sup>

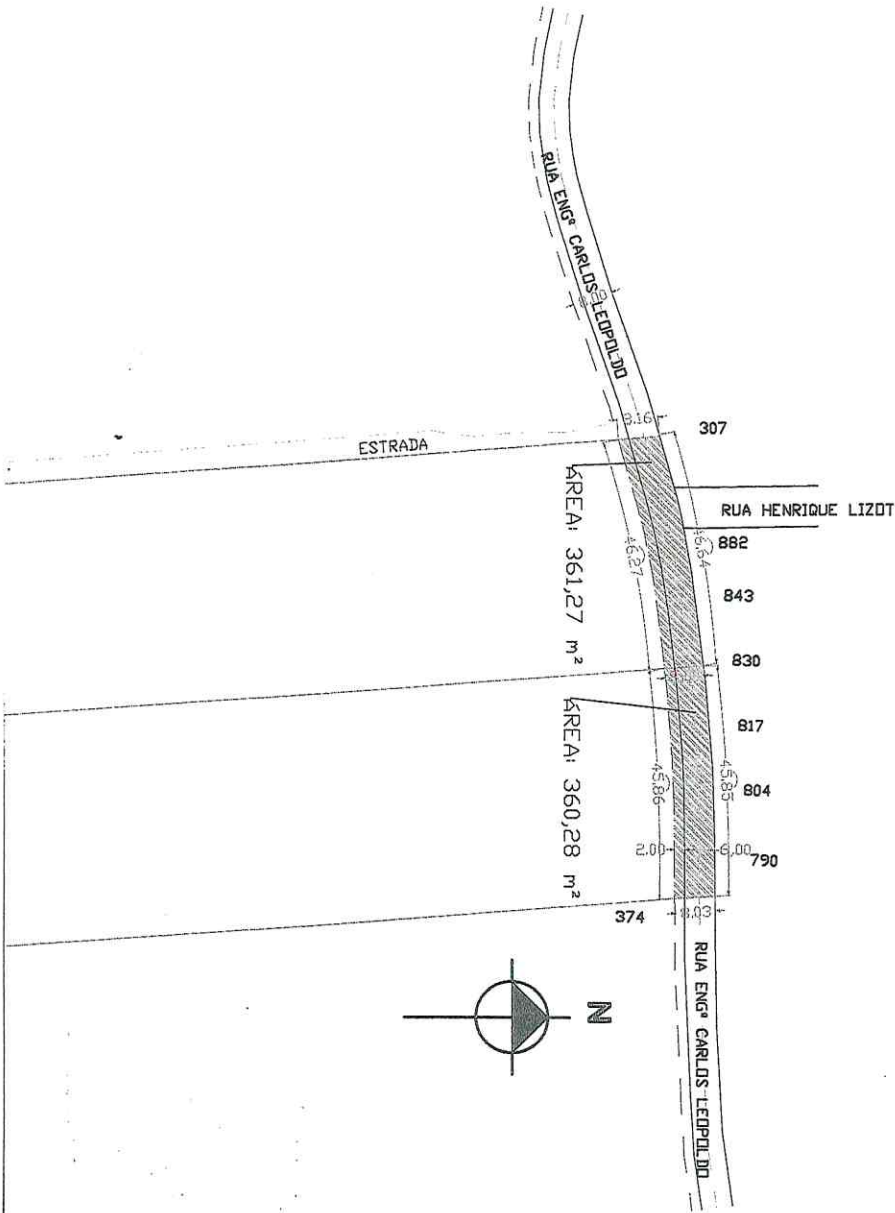
MATRÍCULA 4.450 A  
ÁREA 20.000 m<sup>2</sup>



*Antonio Silva Nora*  
Antonio Silva Nora  
Eng. CIVIL - CREM: 76999  
PMNRS MAT. 987/2013



  
Antonio Silva Nora  
Eng. Civil - CREA 76999  
PMNRS MAT 987/2013



  
 Antonio Silva Nora  
 Eng. Civil CREA: 76999  
 14.11.2018 08:57:2018